

vtech®

Parent's Guide

Go!Go!
Smart Wheels®

3-in-1 Launch & Go Raceway™

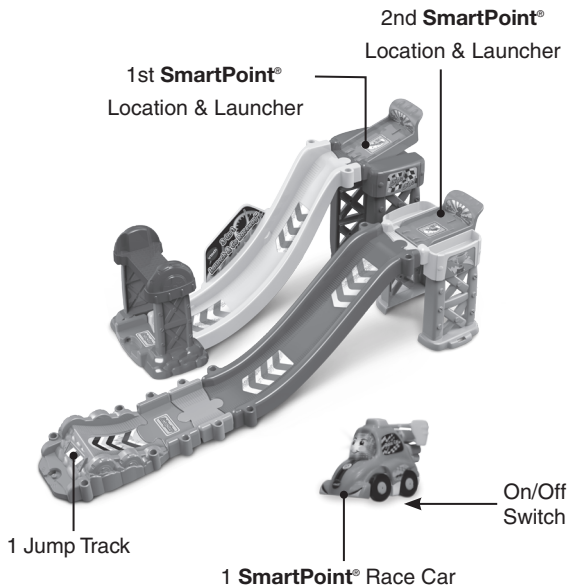


91-003774-009 US

INTRODUCTION

Thank you for purchasing the **Go! Go! Smart Wheels® 3-in-1 Launch & Go Raceway™!**

Race through exciting courses with the **3-in-1 Launch & Go Raceway™** by **VTech®**. Rearrange the tracks and create a dual raceway, stunt track or super raceway! This set includes a cute **SmartPoint® Race Car** that plays three songs and six melodies and an action button which triggers fun movements. Drive over two **SmartPoint®** locations to hear fun phrases, sound effects and melodies.



INCLUDED IN THIS PACKAGE

Go! Go! Smart Wheels® 3-in-1 Launch & Go Raceway™



One **SmartPoint®**
Race Car



One small platform with
SmartPoint® launcher



Two short
platform supports



One large platform with
SmartPoint® launcher



Two tall
platform supports



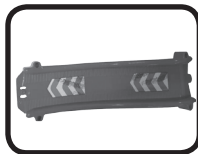
Two bridge supports



One bridge



One ramp track A



One ramp track B



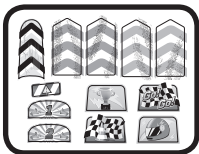
One jump track



One 1/4 track, male



Two adapter tracks



One sheets of labels

Parent's guide

WARNING:

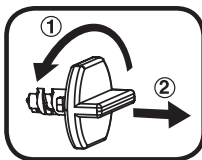
All packing materials such as tape, plastic sheets, packaging locks, removable tags, cable ties, cords and packaging screws are not part of this toy, and should be discarded for your child's safety.

NOTE: Please keep this parent's guide as it contains important information.

ATTENTION :

Pour la sécurité de votre enfant, débarrassez-vous de tous les produits d'emballage tels que rubans adhésifs, feuilles de plastique, attaches, étiquettes, cordons et vis d'emballage. Ils ne font pas partie du jouet.

NOTE : Il est conseillé de conserver ce guide des parents car il comporte des informations importantes.



Unlock the packaging locks:

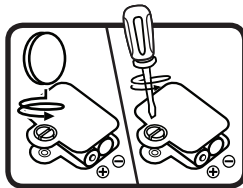
- ① Turn the packaging lock counterclockwise several times.
- ② Pull out and discard the packaging lock.

GETTING STARTED

Battery Removal and Installation

Race Car

1. Make sure the unit is turned **Off**.
2. Locate the battery cover on the bottom of the unit. Use a coin or a screwdriver to loosen the screw.
3. Install 2 new AAA (AM-4/LR03) batteries following the diagram inside the battery box.
4. Replace the battery cover and tighten the screw to secure.



BATTERY NOTICE

- Use new alkaline batteries for maximum performance.
- Use only batteries of the same or equivalent type as recommended.
- Do not mix different types of batteries: alkaline, standard (carbon-zinc) or rechargeable, or new and used batteries.
- Do not use damaged batteries.
- Insert batteries with the correct polarity (+ and -).
- Do not short-circuit the battery terminals.
- Remove exhausted batteries from the toy.
- Remove batteries during long periods of non-use.
- Do not dispose of batteries in fire.
- Do not charge non-rechargeable batteries.
- Remove rechargeable batteries from the toy before charging (if removable).
- Rechargeable batteries are only to be charged under adult supervision.



WARNING / ATTENTION:

Adult assembly required for battery installation.

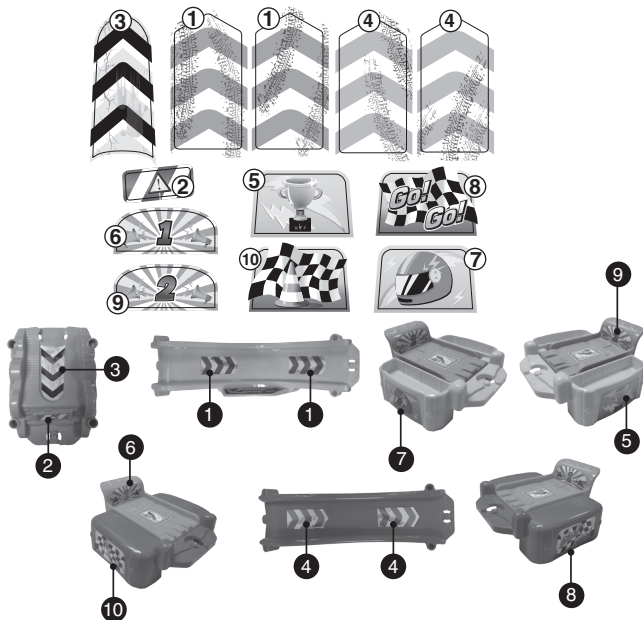
Keep batteries out of reach of children.

Les piles ou accumulateurs doivent être installés par un adulte.

Tenir les piles ou accumulateurs hors de portée des enfants.

LABEL APPLICATION

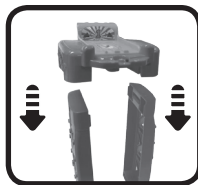
Please stick the labels to the playset securely as indicated on the following pages:



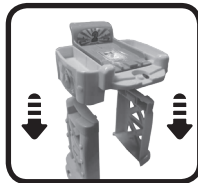
ASSEMBLY INSTRUCTIONS

With the **Go! Go! Smart Wheels® 3-in-1 Launch & Go Raceway™**, safety comes first. To ensure your child's safety, adult assembly is required.

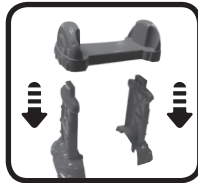
1. Attach the **tall platform supports** to the **small launcher platform**. You will hear a “click” sound to indicate the pieces are secure. Once the pieces are connected, they cannot be detached.



2. Attach the **short platform supports** to the **large launcher platform**. You will hear a “click” sound to indicate the pieces are secure. Once the pieces are connected, they cannot be detached.



3. Attach the **bridge supports** to the **bridge**. You will hear a “click” sound to indicate the pieces are secure. Once the pieces are connected, they cannot be detached.



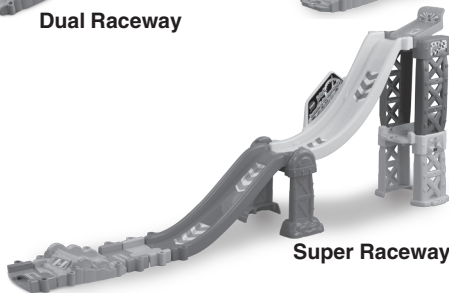
After the above steps, connect these pieces to the included track pieces. You can configure them into different shapes.



Dual Raceway



Stunt Track



Super Raceway

You are now ready to play! Connect the track pieces together. Or connect them to other **Go! Go! Smart Wheels®** playsets (each sold separately).

Note

SmartPoint® vehicles respond to **SmartPoint®** locations with different phrases, music or fun sound effects (each sold separately).

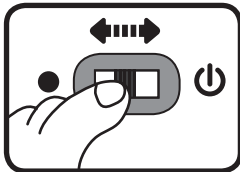
Note

If the unit powers down or if the light fades out during play, please install a new set of batteries.

RACE CAR FEATURES

1. On/Off/ Switch

To turn the Race Car **On**, slide the **On/Off Switch** to the **On** ☺ position. To turn the Race Car **Off**, slide the **On/Off Switch** to the **Off** ● position.



2. Automatic Shut-Off

To preserve battery life, the included **Race Car** will automatically shut off after approximately 60 seconds without input. The unit can be turned on again by pressing the light-up button or by pushing the **Race Car** quickly.

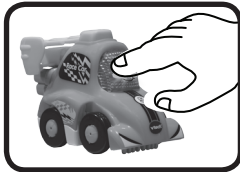
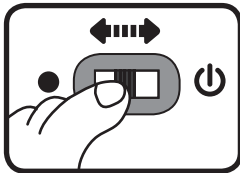
NOTE

This product is in Try-Me mode in the packaging. After opening the package, turn the vehicle off and on again to proceed with normal play. If the unit powers down while playing, please install a new set of batteries.

ACTIVITIES

Race Car

1. Slide the **On/Off Switch** to turn the unit **On**. You will hear race car sounds, a song and a phrase. The light will flash with the sounds.
2. Press the **Light-Up Button** to hear sounds, songs, phrases and melodies. The light will flash with the sounds.



3. Press the **Action Button** on the vehicle to activate a mechanical function on the vehicle and hear fun sounds. The light will flash with the sounds.



4. Push the **Race Car** to hear fun sounds and melodies. While the melody is playing, push the **Race Car** again to add in fun sounds on top of the melody. The light will flash with the sounds.



5. For added fun, the **Race Car** interacts with the **Go! Go! Smart Wheels® 3-in-1 Launch & Go Raceway™**. Simply place the **Race Car** on one of the two **SmartPoint®** locations to see the **Race Car's** light flash and to hear fun sounds, short tunes and phrases. The **Race Car** also interacts with other **Go! Go! Smart Wheels®** playsets (each playset sold separately).



MELODY LIST

1. Aiken Drum
2. Skip to My Lou
3. Camptown Races
4. Ta Ra Ra Boom De Ay
5. Old King Cole
6. Little Bitty Pretty One

SING-ALONG SONG LYRICS

Song 1

Vroom, Vroom time to zoom
Vroom, Vroom time to zoom
Vroom, Vroom time to zoom
Join me, watch me race and zoom!

Song 2

Oh, let's go racing all day long
Faster than fast, quicker than quick
Oh, let's go racing all day long
I'm brave and fast and strong

Song 3

Go! Go! Smart Wheels,
Go! Go! Smart Wheels,
I'm a Go! Go! Smart Wheels Race Car,
Let's speed around the track (Go! Go!)
We'll zoom ahead, just try and catch me
Let's Go! Go! and see! (Go! Go!)





CARE & MAINTENANCE

1. Keep the unit clean by wiping it with a slightly damp cloth.
2. Keep the unit out of direct sunlight and away from any direct heat sources.
3. Remove the batteries if the unit will not be in use for an extended period of time.
4. Do not drop the unit on hard surfaces and do not expose the unit to moisture or water.

TROUBLESHOOTING

If for some reason the unit stops working or malfunctions, please follow these steps:

- 
1. Please turn the unit **Off**.
 2. Interrupt the power supply by removing the batteries.
 3. Let the unit sit for a few minutes, then replace the batteries.
 4. Turn the unit **On**. The unit should now be ready to play again.
 5. If the product still does not work, install a new set of batteries.
- 

IMPORTANT NOTE

If the problem persists, please call our **Consumer Services Department** at **1-800-521-2010** in the U.S., **1-877-352-8697** in Canada, or visit our website **vtechkids.com** and fill out our **Contact Us** form located under the **Customer Support** link. Creating and developing VTech products is accompanied by a responsibility that we take very seriously. We make every effort to ensure the accuracy of the information, which forms the value of our products. However, errors sometimes can occur. It is important for you to know that we stand behind our products and encourage you to contact us with any problems and/or suggestions you might have. A service representative will be happy to help you.

CAUTION

Changes or modifications not expressly approved by the party responsible for compliance could void the user's authority to operate the equipment.

NOTE

This equipment has been tested and found to comply with the limits for a Class B digital device, pursuant to Part 15 of the FCC Rules. These limits are designed to provide reasonable protection against harmful interference in a residential installation. This equipment generates, uses and can radiate radio frequency energy and, if not installed and used in accordance with the instructions, may cause harmful interference to radio communications. However, there is no guarantee that interference will not occur in a particular installation. If this equipment does cause harmful interference to radio or television reception, which can be determined by turning the equipment off and on, the user is encouraged to try to correct the interference by one or more of the following measures:

- Reorient or relocate the receiving antenna.
- Increase the separation between the equipment and receiver.

- Connect the equipment into an outlet on a circuit different from that to which the receiver is connected.
- Consult the dealer or an experienced radio/TV technician for help.

Supplier's Declaration of Conformity

47 CFR § 2.1077 Compliance Information

Trade Name: VTech®
Model: 5275
Product Name: Go! Go! Smart Wheels®
3-in-1 Launch & Go Raceway™
Responsible Party: VTech Electronics North America, LLC
Address: 1156 W. Shure Drive, Suite 200
Arlington Heights, IL 60004
Website: vtechkids.com

THIS DEVICE COMPLIES WITH PART 15 OF THE FCC RULES. OPERATION IS SUBJECT TO THE FOLLOWING TWO CONDITIONS: (1) THIS DEVICE MAY NOT CAUSE HARMFUL INTERFERENCE, AND (2) THIS DEVICE MUST ACCEPT ANY INTERFERENCE RECEIVED, INCLUDING INTERFERENCE THAT MAY CAUSE UNDESIRED OPERATION.

CAN ICES-3 (B)/NMB-3(B)



**Visit our website for more
information about our products,
downloads, resources and more.**

vtechkids.com
vtechkids.ca



Read our complete warranty policy online at
vtechkids.com/warranty
vtechkids.ca/warranty



TM & © 2019 VTech Holdings Limited.
All rights reserved.
Printed in China.
91-003774-009 

